

MONTHLY MEMBERSHIP PROGRESS REPORT

LOCATION INDIA

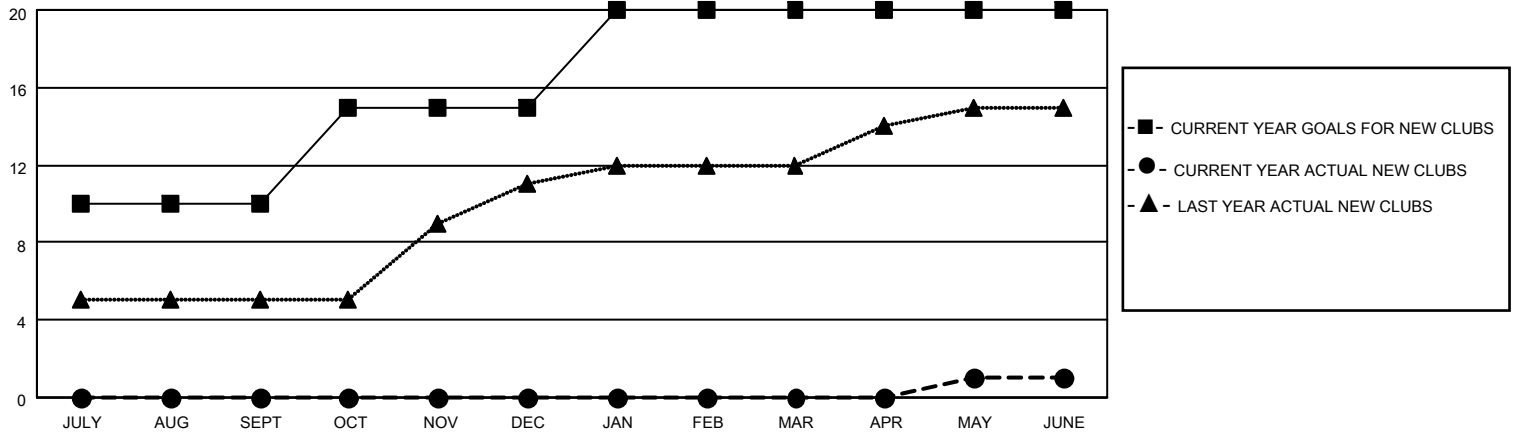
District 3232F1

Results as of: 6/30/2023

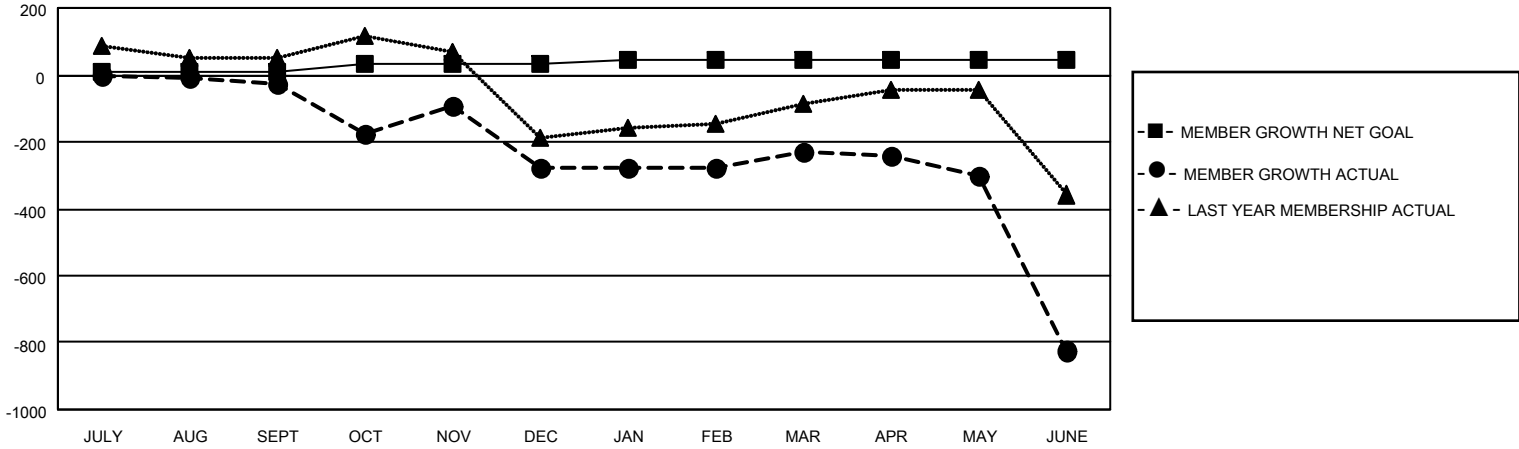
Clubs			
RESULTS FOR 2022-2023			
QUARTER	NEW CLUB GOAL	NEW CLUBS	DROPPED CLUBS
JULY/AUG/SEPT	10	0	0
OCT/NOV/DEC	5	0	4
JAN/FEB/MAR	5	0	0
APR/MAY/JUNE	0	1	6

Members			
RESULTS FOR 2022-2023			
QUARTER	MEMBER GROWTH NET GOAL	MEMBER GROWTH ACTUAL	DROPPED MEMBERS ACTUAL (including transfers)
JULY/AUG/SEPT	10	50	69
OCT/NOV/DEC	25	121	370
JAN/FEB/MAR	10	81	16
APR/MAY/JUNE	0	471	935

GOALS AND ACTUAL NEW CLUBS CUMULATIVE



GOALS AND ACTUAL MEMBERS CUMULATIVE



DROPPED CLUBS: 10

76 CLUBS OF 131 ADDED 1 OR MORE NEW MEMBERS

GENDER DISTRIBUTION

MALE	2,029 (62.20%)
FEMALE	1,233 (37.80%)
NON BINARY	0 (0.00%)
PREFER NOT TO ANSWER	0 (0.00%)

DROPPED MEMBERS

[CLICK HERE FOR CUMULATIVE MEMBERSHIP DATA](#)

DECEASED	8
CLUB CANCELLED	254
OTHER	1,128
TOTAL	1,390

TOTAL FAMILY UNIT MEMBERS 1,641

FAMILY MEMBERS PAYING HALF DUES 998